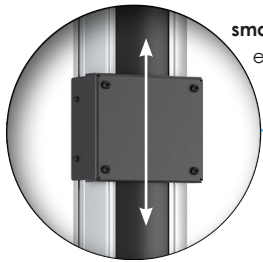
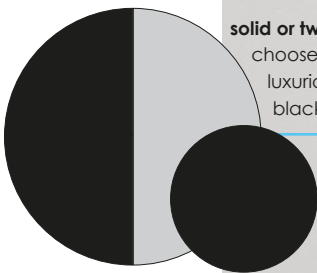


INSTALLATION SERIES

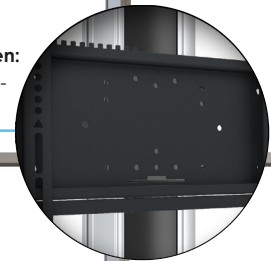
Flat panel mounting with maximum user friendliness



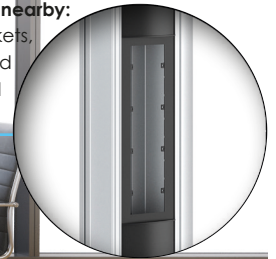
small or tall, height does not matter:
easily adjust the monitor to accommodate the best working height



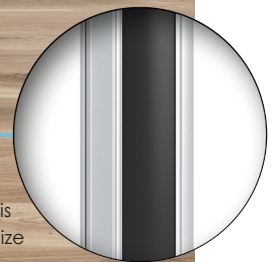
solid or two-tone:
choose stylish black or luxurious aluminium and black



fits any screen:
combine with one of our universal mounting brackets



keep everything nearby:
mount power sockets, audiovisual control panels, USB ports and more to the 4-way integration panel (universal built-in size: 60 mm)



keep cables neatly organised:
hide them within the column, behind a stylish plastic cover strip that is easily cut to size



INSTALLATION SERIES

Stands and Trolleys



FLOOR STAND

NEW

Colours	
Position	Landscape & Portrait
Acc.	See from page 38
Note	170 x 140 modular mounting
Required	Universal wall mount, see from page 9

Article code	Colour	Max. load
062.4420	Aluminium & Black	70 inch, 65 kg
062.4420.04	Black	70 inch, 65 kg
062.4425	Aluminium & Black	90 inch, 85 kg
062.4425.04	Black	90 inch, 85 kg



TROLLEY (base plate on wheels)

NEW

Colours	
Position	Landscape & Portrait
Acc.	See from page 38
Note	170 x 140 modular mounting
Required	Universal wall mount, see from page 9

Article code	Colour	Max. load
062.4430	Aluminium & Black	65 inch, 60 kg
062.4430.04	Black	65 inch, 60 kg
062.4435	Aluminium & Black	90 inch, 85 kg
062.4435.04	Black	90 inch, 85 kg



TROLLEY (wheel frame)

NEW

Colours	
Position	Landscape & Portrait
Acc.	See from page 38
Note	170 x 140 modular mounting
Required	Universal wall mount, see from page 9

Article code	Colour	Max. load
062.4450	Aluminium & Black	90 inch, 85 kg
062.4450.04	Black	90 inch, 85 kg

INSTALLATION SERIES

Floor to wall/ceiling mounted columns



FLOOR-WALL COLUMN

NEW

	Colour	● ●
	Max. load	100 kg
	Max. inch	90 inch
	Position	Landscape & Portrait
	Acc.	See from page 38
	Note	170 x 140 modular mounting
	Required	Universal wall mount, see from page 9
	Other info	Different colours and lengths on request

Article code	Colour
063.4440	Aluminium & Black
063.4440.04	Black



FLOOR-CEILING COLUMN

NEW

	Colour	● ●
	Max. load	100 kg
	Max. inch	90 inch
	Position	Landscape & Portrait
	Acc.	See from page 38
	Note	170 x 140 modular mounting
	Required	Universal wall mount, see from page 9
	Other info	Different colours and lengths on request

Article code	Colour
063.4445	Aluminium & Black
063.4445.04	Black

Accessories



INTEGRATION PANEL for 1 to 4 sockets

Article code

[063.4400](#)



LAPTOP SUPPORT

Article code	Description
063.0100	Surface 386 x 308 mm
063.0110	Surface 300 x 189 mm

INSTALLATION SERIES

Videoconferencing floor to wall/ceiling mounted columns



FLOOR-WALL COLUMN 2x 46-55 INCH incl. 2 supports

NEW

🎨	Colour	● ●
⚖️	Max. load	100 kg
📏	Max. inch	2x 46-55 inch
📺	Position	Landscape & Portrait
⚙️	Acc.	See from page 38
📋	Note	170 x 140 modular mounting
⚠️	Required	Universal wall mount, see from page 9
ℹ️	Other info	Different colours and lengths on request

Article code	Colour
063.4540	Aluminium & Black
063.4540.04	Black

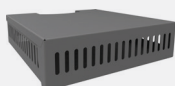


FLOOR-CEILING COLUMN 2x 46-55 INCH incl. 2 supports

NEW

🎨	Colour	● ●
⚖️	Max. load	100 kg
📏	Max. inch	2x 46-55 inch
📺	Position	Landscape & Portrait
⚙️	Acc.	See from page 38
📋	Note	170 x 140 modular mounting
⚠️	Required	Universal wall mount, see from page 9
ℹ️	Other info	Different colours and lengths on request

Article code	Colour
063.4545	Aluminium & Black
063.4545.04	Black



MEDIA HOUSING
max. 450 x 377 x 114 mm,
lockable

Article code
063.0700



**MINI-PC/THIN
CLIENT HOUSING**
max. 397 x 218 x 100 mm, lockable

Article code
063.0710